

Parts Catalogue



Generated on 12 September 2025 | 184 Products
Excluding GST & Freight. All prices in AUD

Accessories



1000 - RR54 Canopy Baffle Filter

\$65.00

Compatible with: RR30, RR54



1000X - RR72 / RR36 Canopy Baffle Filter

\$65.00

Compatible with: RR36, RR72



4360 - Canopy Leg

\$41.00

Compatible with: RR30, RR36, RR54, RR72



3453 - Gantry Lower Arm LH - NO COST OPTION

\$0.00

Compatible with: RR72



3454 - Gantry Lower Arm RH - NO COST OPTION

\$0.00

Compatible with: RR36, RR72



R10F - Chicken Fork

\$79.00

Compatible with: RR30, RR36, RR54, RR72



1330 - Chamber Floor Cleaning Tool

\$56.00

Compatible with: RR30, RR36, RR54, RR72



R815 - RR54 / RR30 Catch Tray

\$87.00

Compatible with: RR30, RR54



815X - RR72 / RR36 Catch Tray

\$89.00

Compatible with: RR36, RR72



RM53 - Fan Cleaning Tool

\$12.00

Notes: Also supplied in the full servicing kit
Compatible with: RR30, RR36, RR54, RR72



R0T3 - 3 Tier Trolley Flat pack

\$652.00

Compatible with: RR30, RR36, RR54, RR72



T34W - 4 x Wheel Kit for 3 Tier Trolley

\$154.00

Compatible with: RR30, RR36, RR54, RR72



RM78 - RR54 / RR30 Baking Tray Kit (440 x 440) Single Tray

\$58.00

Compatible with: RR30, RR54



RM74 - RR72 / RR36 Baking Tray Kit (450 x 500) Single Tray

\$61.00

Compatible with: RR36, RR72

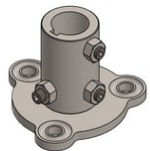
Chamber



1260 - Thermcouple K Type 50mmL (M8)

\$58.00

Compatible with: RR30, RR36, RR54, RR72
Recommended with: Insulation and silver tape



1668 - Fan Shaft Coupling

\$128.00

Notes: Early 2NS may differ
Compatible with: RR30, RR36, RR54, RR72



2250 - Fan Grille Assembly LH & RH

\$52.00

Compatible with: RR30, RR54



2250X - Fan Grille XL (Rev 1)

\$52.00

Compatible with: RR36, RR72



2310 - RR54 / RR30 Floor Drain Grate LH

\$36.00

Compatible with: RR30, RR54



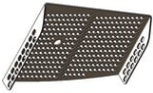
2320 - RR54 / RR30 Floor Drain Grate RH

\$36.00

Compatible with: RR54

**2310X - RR72 / RR36 Floor Drain Grate LH****\$36.00**

Compatible with: RR72

**2320X - RR72 / RR36 Floor Drain Grate RH****\$36.00**

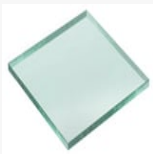
Compatible with: RR36, RR72

**2341L - Basket Filter Assembly LH****\$88.00**

Compatible with: RR30, RR54, RR72

**2341R - Basket Filter Assembly RH****\$88.00**

Compatible with: RR36, RR54, RR72

**2440 - Light Glass 8mm 120mmx70mm****\$22.00**

Compatible with: RR30, RR36, RR54, RR72

Drive

**RM12 - RR54 / RR30 Drive motor with coupling Kit (D71 FRAME)****\$612.00**

Compatible with: RR30, RR54

**M12X - RR72 / RR36 Drive motor with coupling Kit (D80 FRAME)****\$612.00**

Compatible with: RR36, RR72



1656 - Motor Coupling (With T-Sleeve)

\$252.00

Notes: Early models may differ
Compatible with: RR30, RR36, RR54, RR72
Recommended with: Technobake Tech Support



R0M5 - Top Bearing Kit

\$252.00

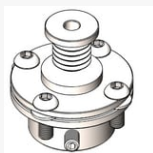
Compatible with: RR30, RR36, RR54, RR72
Recommended with: 0M5P - Bearing Puller



RM5P - Bearing puller for M5 Top Bearing Kit

\$50.00

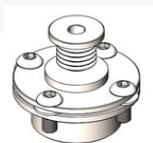
Compatible with: RR30, RR36, RR54, RR72



RM4P - Small bobbin pulley assy c/w Parallel bottom half (Old Style)

\$84.00

Notes: Older ovens only, check required item carefully. See also 0M4T
Compatible with: RR30, RR54



RM4T - Small bobbin pulley assy c/w Taper bottom half

\$80.00

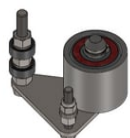
Notes: Newer ovens only, check required item carefully. See also 0M4P
Compatible with: RR36, RR54, RR72



3530L - LH Pulley Idler Assembly

\$78.00

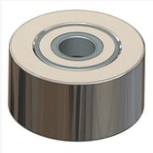
Compatible with: RR30, RR54, RR72



3530R - RH Pulley Idler Assembly

\$78.00

Compatible with: RR36, RR54, RR72

**3532 - Zinc Coated Steel Tensioner Pulley Wheel (75mm OD)****\$46.00**

Compatible with: RR30, RR36, RR54, RR72

**2860 - RR54 / RR30 Drive Belt (PIX-X'ceed PJ 1549)****\$42.00**

Compatible with: RR30, RR54

**2860X - RR72 / RR36 Drive Belt (PIX-X'ceed HT-6PJ 1651)****\$52.00**

Compatible with: RR36, RR72

**2840 - Spring Chain Tensioner SS304 150mm****\$13.00**

Compatible with: RR30, RR36, RR54, RR72

**3630 - Spring Belt Tensioner assembly includes nuts.****\$19.00**

Compatible with: RR30, RR36, RR54, RR72

**RM49 - Drive chain with con link Kit****\$40.00**

Compatible with: RR30, RR36, RR54, RR72

**2445 - Gas Ram for Gantry****\$61.00**

Compatible with: RR30, RR36, RR54, RR72



RM1L - LH Top drive dog shaft and plate assy

\$220.00

Compatible with: RR30, RR54, RR72

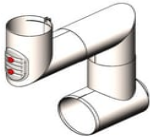


RM1R - RH Top drive dog shaft and plate assy

\$220.00

Compatible with: RR36, RR54, RR72

Ducting & Canopies



RRAP - Canopy Ducting Adaptor Kit (C/W 1200mm Ceiling Elbow). Roastrunner oven canopy to 250mm OD ducting ceiling drop.

\$973.00

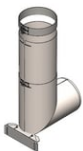
Compatible with: RR30, RR36, RR54, RR72



10004 - Extension ducting (4 Metre Ceiling)

\$300.00

Compatible with: RR30, RR36, RR54, RR72



10003 - Vertical ducting (3 Metre Ceiling) Extensible with wall bracket.

\$950.00

Compatible with: RR30, RR36, RR54, RR72

Electrical



2110 - RR54 Middle and Top Air Heating Element (1750W) (c/w Brass Gland/ NO Compression gland)

\$97.00

Notes: Early models only, current is compression gland. For all side elements except bottom element.

Compatible with: RR30, RR54

Recommended with: Insulation and silver tape



2120 - RR54 Bottom LH air heating element (1220W) (c/w Brass Gland/ NO Compression gland)

\$100.00

Notes: Early models only, current is compression gland
Compatible with: RR30, RR54
Recommended with: Insulation and silver tape



2130 - RR54 Bottom RH air heating element (1220W) (c/w Brass Gland/ NO Compression gland)

\$100.00

Notes: Early models only, current is compression gland
Compatible with: RR54
Recommended with: Insulation and silver tape



R0E6 - RR54 Top air heating element Kit (1750W) (c/w Compression Gland)

\$139.00

Notes: Late model only (fabtec date required)
Compatible with: RR54
Recommended with: Insulation and silver tape



RE7L - RR54 Bottom LH air heating element Kit (1220W) (c/w Compression Gland)

\$133.00

Notes: Late model only (fabtec date required)
Compatible with: RR54
Recommended with: Insulation and silver tape



RE7R - RR54 Bottom RH air heating element Kit (1220W) (c/w Compression Gland)

\$133.00

Notes: Late model only (fabtec date required)
Compatible with: RR54
Recommended with: Insulation and silver tape



RE6X - RR72 / RR36 Top and Middle Air Heating Element Kit (2000W) (c/w Compression Gland)

\$95.00

Notes: This element is for positions other than the lowest chamber element. Not side specific
Compatible with: RR36, RR72
Recommended with: Insulation and silver tape



E7LX - RR72 Bottom LH Air Heating Element Kit (1400W)(c/w Compression Gland)

\$133.00

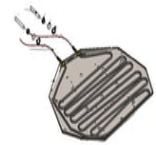
Compatible with: RR72
Recommended with: Insulation and silver tape



E7RX - RR72 / RR36 Bottom RH air heating element Kit (1400W) (c/w Compression Gland)

\$133.00

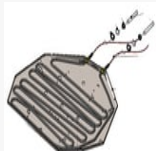
Compatible with: RR36, RR72
Recommended with: Insulation and silver tape



RE8L - RR54/RR72 LH Bottom pan element Kit (2500W)

\$318.00

Compatible with: RR30, RR54, RR72



RE8R - RR54/RR72 RH Bottom pan element Kit (2500W)

\$318.00

Compatible with: RR36, RR54, RR72



7220 - Integrated Touchpanel, Display and Control computer

\$2100.00

Notes: Check model for correct software install
Compatible with: RR30, RR36, RR54, RR72



7210 - Bezel, Old Style (Pre 2021 Ovens)

\$75.00

Notes: some ovens have already been fitted with an update kit and a new style bezel. Must be checked
Compatible with: RR30, RR54



RM22 - Touchscreen Bezel Retrofit Conversion Kit

\$150.00

Compatible with: RR30, RR54



7075 - Roastrunner I/O Board

\$1575.00

Compatible with: RR30, RR36, RR54, RR72



BA002 - IO Board Battery BR 2032

\$10.00

Compatible with: RR30, RR36, RR54, RR72



7230 - On / Off Switch (Auspicious) Post 2021 Ovens

\$47.00

Compatible with: RR30, RR36, RR54, RR72



RE15 - On / Off Switch (Omron) kit c/w Soldered wire & Molex plug, Prior to 2021 and Refurbished Ovens

\$45.00

Compatible with: RR30, RR54



7512 - USB A Jack to USB, Cable

\$16.00

Compatible with: RR30, RR36, RR54, RR72



7335 - 3" Speaker Response

\$56.00

Compatible with: RR30, RR36, RR54, RR72



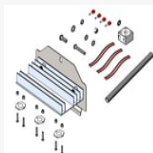
7302 - Proximities Sensor - Unshielded

\$64.00

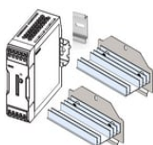
Compatible with: RR30, RR36, RR54, RR72

**R0E5 - Door Switch Sensor Kit****\$112.00**

Compatible with: RR30, RR36, RR54, RR72

**RM47 - Led Kit (one only)****\$125.00**

Compatible with: RR30, RR36, RR54, RR72

**R0E9 - LED Refurbishment Kit Pair and power supply****\$362.00**

Compatible with: RR30, RR54

**7056 - Power supply (Omron) 5 amp 24v DC****\$136.00**

Compatible with: RR30, RR36, RR54, RR72

**7118 - Control Relay DC24 Omron (For three way valve and lights supply)****\$27.00**

Compatible with: RR30, RR36, RR54, RR72

**7051 - Control Relay 2 Pole ABB (For three way valve and lights supply)****\$30.00**

Notes: Only supplied to replace failed ABB Relays. Use 7118 for later models.
Compatible with: RR30, RR54

**7060 - Circuit Breaker C10 / 1 (For 24v DC power supply)****\$22.00**

Compatible with: RR30, RR36, RR54, RR72

**RC32 - Circuit Breaker C32 / 3 (Main power supply breaker)****\$77.00**

Compatible with: RR30, RR36, RR54, RR72

**7030 - Element & Drive Motor Contactor****\$224.00**

Compatible with: RR30, RR36, RR54, RR72

**7040 - Motor overloads ZB 12****\$52.00**

Compatible with: RR30, RR36, RR54, RR72

**32AC - Isolation Contactor 32 A****\$171.00**

Compatible with: RR30, RR36, RR54, RR72

**7073 - Fan thin 80mm 24VDC****\$22.00**

Compatible with: RR30, RR36, RR54, RR72

**RM73 - Canopy Fan 350mm Complete kit (C/w with housing & Cable)****\$858.00**

Notes: This is universal fit and will replace the old 300mm fans with inner shroud
Compatible with: RR30, RR36, RR54, RR72

**R532 - 32A Plug 56P532 5 Round Pin 500VAC IP66 AU standard****\$85.00**

Compatible with: RR30, RR36

**R550 - 50A Plug 56P550 5 Round Pin 500VAC IP66 AU standard****\$85.00**

Compatible with: RR54, RR72

**RE14 - Main power cable Kit 5 Metre (C/w with 50A Plug fitted)****\$272.00**

Compatible with: RR54, RR72

Front Fit Up

**2900 - Door Seal****\$242.00**

Compatible with: RR30, RR36, RR54, RR72

**RM11 - Door Seal Surround Brass Nut****\$6.00**

Compatible with: RR30, RR36, RR54, RR72

**RM16 - RR54 / RR30 Top Teflon door seal c/w retainer strip and retainer lugs.****\$106.00**

Compatible with: RR30, RR54

**4121 - RR54 Door Glass Strip Reflector Assembly LH****\$55.00**

Compatible with: RR30, RR54

**4122 - RR54 Door Glass Strip Reflector Assembly RH****\$55.00**

Compatible with: RR54



4121X - RR72 Door Glass Strip Reflector Assembly LH

\$55.00

Compatible with: RR72



4122X - RR72 / RR36 Door Glass Strip Reflector Assembly RH

\$55.00

Compatible with: RR36, RR72



RM6L - LH Door handle Assembly

\$177.00

Compatible with: RR30, RR54, RR72



RM6R - RH Door handle Assembly

\$177.00

Compatible with: RR36, RR54, RR72



3919 - Retro Fit Pivot Pin Assembly

\$85.00

Notes: To be used if the door handle pin is broken
Compatible with: RR30, RR36, RR54, RR72



3435 - Oven Handle - Black Plastic sleeve only

\$28.00

Compatible with: RR30, RR72



R0M7 - Door latch assembly c/w packer plates,rollers, balls.

\$143.00

Compatible with: RR30, RR36, RR54, RR72

**3250 - Roller Ball Stainless Steel****\$23.00**

Compatible with: RR30, RR36, RR54, RR72

**3251 - Roller Ball Acetal - White****\$11.00**

Compatible with: RR30, RR36, RR54, RR72

**4170 - Outer Glass Knob Assembly****\$27.00**

Compatible with: RR30, RR36, RR54, RR72

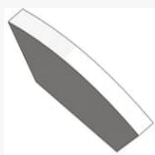
**4160 - Outer Glass Slide Lock Assembly****\$33.00**

Compatible with: RR30, RR36, RR54, RR72

**3010 - Teflon Door Block (Gantry side)****\$88.00**

Notes: OVEN SPECIFIC. MUST PROVIDE SERIAL NUMBER TO TECH SUPPORT TO GET CORRECT SHAPE.

Compatible with: RR30, RR36, RR54, RR72

**4129 - Teflon Door Block (Door side)****\$69.00**

Notes: OVEN SPECIFIC. MUST PROVIDE SERIAL NUMBER TO TECH SUPPORT TO GET CORRECT SHAPE.

Compatible with: RR30, RR36, RR54, RR72

**RM15 - Central glass panel c/w decals****\$126.00**

Compatible with: RR30, RR36, RR54, RR72



RM59 - RR54 LH Fully assembled door Kit (Excluding outer glass)

\$1224.00

Compatible with: RR72



RM60 - RR54 RH Fully assembled door Kit (Excluding outer glass)

\$1224.00

Compatible with: RR36, RR72



R59X - RR72 LH Fully assembled door Kit (Excluding outer glass)

\$1224.00

Compatible with: RR30, RR54



R60X - RR72 RH Fully assembled door Kit (Excluding outer glass)

\$1224.00

Compatible with: RR54



RM75 - RR54 / RR30 Outer Glass Kit Black (C/w Edge protector fitted)

\$504.00

Compatible with: RR30, RR54



RM77 - RR72 / RR36 Outer Glass Kit Black (C/w Edge protector fitted)

\$599.00

Compatible with: RR36, RR72



RM65 - Edge Protection Strip Kit

\$99.00

Compatible with: RR30, RR36, RR54, RR72



4351 - RR72 Facade Assembly complete Kit

\$782.00

Compatible with: RR72



4350 - RR54 (3SF) Roof Access Panel complete Kit

\$399.00

Compatible with: RR54



4350X - RR72 Roof Access Panel complete Kit

\$399.00

Compatible with: RR72



R922 - Silicone Black

\$32.00

Compatible with: RR30, RR36, RR54, RR72



R936 - Silicone High Temperature Red

\$73.00

Compatible with: RR30, RR36, RR54, RR72

Gantry



RM2L - LH Driven dog for spine

\$224.00

Compatible with: RR30, RR54, RR72



RM2R - RH Driven dog for spine

\$224.00

Compatible with: RR36, RR54, RR72



R0M3 - RR54 / RR30 LH Driven dog for tray rack

\$234.00

Compatible with: RR30, RR54



M336 - RR36 Driven dog for tray rack

\$167.00

Compatible with: RR36



RM3X - RR72 LH Driven dog for tray rack

\$167.00

Compatible with: RR72



3891 - RR54 / RR30 LH Centre Column (Keyhole Spine)

\$275.00

Compatible with: RR54



3892 - RR54 / RR30 RH Centre Column (Keyhole Spine)

\$275.00

Compatible with: RR30, RR54



3891X - RR72 LH Centre Column (Keyhole Spine)

\$295.00

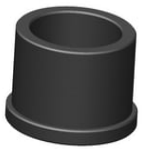
Compatible with: RR72



3892X - RR72 / RR36 RH Centre Column (Keyhole Spine)

\$295.00

Compatible with: RR36, RR72



3470 - Bottom Carbon Bearing Gantry Hub

\$18.00

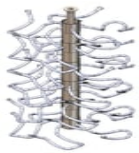
Compatible with: RR30, RR36, RR54, RR72



3471 - Top Carbon Bearing Gantry Hub

\$22.00

Compatible with: RR30, RR36, RR54, RR72



L30SK - RR54 / RR30 LH Centre Spine Upgrade Kit with Hooks

\$1248.00

Compatible with: RR30, RR54

Recommended with: Recommended with Carbons top and bottom 3470, 3471



R30SK - RR54 / RR30 RH Centre Spine Upgrade Kit with Hooks

\$1248.00

Compatible with: RR54

Recommended with: Recommended with Carbons top and bottom 3470, 3471



3830 - RR54 Flat Tray Rack

\$388.00

Compatible with: RR30, RR54



3830X - RR72 / RR36 Flat Tray Rack

\$398.00

Compatible with: RR36, RR72

Legs and Feet



R011 - Rear castor & wheel With Brake and pallet mounting bracket

\$75.00

Compatible with: RR30, RR36, RR54, RR72



R202 - Pair Front Wheel (Rear Facing) Jacking Castor Kit c/w castors, wheels, jacking feet and foot pads.

\$254.00

Notes: Requires use of Technobake oven lifting jig. Cannot be used with old square leg refurbished ovens. Please ensure you have rear braked wheels on the oven when upgrading the front wheels to the rear facing wheels.
Compatible with: RR30, RR36, RR54, RR72



R023 - Foot Pad Black Plastic

\$9.00

Compatible with: RR30, RR36, RR54, RR72



1814 - Leg Shim

\$4.00

Compatible with: RR30, RR36, RR54, RR72



RM20 - Jacking foot (Old Style)

\$76.00

Compatible with: RR30, RR36, RR54, RR72

Plumbing



R0M9 - Wash pump Kit

\$562.00

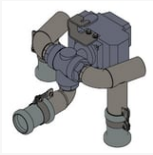
Notes: Please inform the side of the oven that this is required for, so plumbing can be pre fitted
Compatible with: RR36, RR54, RR72



R484 - Header Tank Pump

\$376.00

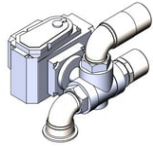
Compatible with: RR30, RR36, RR54, RR72



RM17 - Drain Valve Kit

\$902.00

Compatible with: RR36, RR54, RR72



RM18 - Fat Separator Tank Valve Kit

\$883.00

Compatible with: RR30, RR36, RR54, RR72



4770 - 2 Way Valve (DC Actuator) 1 1/4" BSP Set

\$573.00

Notes: Applies to 2NS ovens only. These are single 30s and the oldest of the RR54. There are very few RR54 2NS remaining in the field.

Compatible with: RR30, RR54



R500 - Solenoid Valve G1/2" 10 Bar 24V DC Brass

\$128.00

Compatible with: RR30, RR36, RR54, RR72



2034 - Kinetic Check Valve 1/2"

\$42.00

Compatible with: RR30, RR36, RR54, RR72



3020 - 4" Ball Float

\$19.00

Compatible with: RR36, RR54, RR72



2030 - Float valve

\$98.00

Compatible with: RR30, RR36, RR54, RR72



1974 - 1/8" BSPT Spray Nozzle SS

\$18.00

Compatible with: RR36, RR54, RR72



1988 - Overflow Hose 25mmID x 1000mm Long

\$59.00

Compatible with: RR36, RR54, RR72



40MMC - Norma Hose Clamp Dia 25mm to 40mm

\$8.00

Compatible with: RR30, RR36, RR54, RR72



1990 - RR72 / RR54 / RR30 Drain Hose 51mmID x 155mm Long

\$27.00

Notes: One for each chamber
Compatible with: RR30, RR54, RR72



1991 - RR36 Drain Hose 51mmID x 100mm Long

\$19.00

Compatible with: RR36



RSSH - Runsko Sport Silicone Hose (ID 51mm x 300mm)

\$42.00

Compatible with: RR30, RR36, RR54, RR72



1992 - Hose Clamp 62mmID SS304

\$9.00

Compatible with: RR30, RR36, RR54, RR72

**R318 - Silicone Gasket Rear of Fat Separator- 50mm Tri Clover****\$10.00**

Compatible with: RR30, RR36, RR54, RR72

**R319 - Silicon Gasket for front access port of Fat Separator 140mm Tri Clover****\$10.00**

Notes: There are different size SS Triclover access ports on fat separators, check sizing.

Compatible with: RR36, RR54, RR72

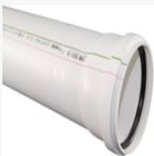
**1930 - Fat Separator Access port plug (Old Style)****\$15.00**

Notes: Only for older ovens without stainless access ports

Compatible with: RR30, RR54

**50250 - Pushfit Pipe 50mm dia x 250mm length****\$12.00**

Compatible with: RR30, RR36, RR54, RR72

**50500 - Pushfit Pipe 50mm dia x 500mm length****\$22.00**

Compatible with: RR30, RR36, RR54, RR72

**5030DEG - Pushfit Pipe 50mm dia x 30deg Bend****\$9.00**

Compatible with: RR30, RR36, RR54, RR72

**R50D - Pushfit Pipe 50mm dia x Double Socket****\$18.00**

Compatible with: RR30, RR36, RR54, RR72

**R50T - Pushfit Pipe 50mm dia Junction 3way****\$18.00**

Compatible with: RR30, RR36, RR54, RR72

**1851 - Pushfit Pipe 50mm dia x 90deg bend****\$22.00**

Compatible with: RR30, RR36, RR54, RR72

**8691 - Pushfit Pipe 50mm dia x 45deg bend****\$9.00**

Compatible with: RR30, RR36, RR54, RR72

**1929 - Pushfit Pipe 50mm dia Rubber Sealing Ring****\$3.00**

Compatible with: RR30, RR36, RR54, RR72

**2029 - Connecting Clamp for pushfit pipe SS****\$11.00**

Compatible with: RR30, RR36, RR54, RR72

**107347 - SS304 Braided 3/4" Flex Hose Water 19mm x 1000mm SS****\$28.00**

Compatible with: RR30, RR36, RR54, RR72

**107348 - SS304 Braided 3/4" Flex Hose Water 19mm x 1500mm SS****\$58.00**

Compatible with: RR30, RR36, RR54, RR72



107758 - SS304 Braided 1/2" Flex Hose Water 10mm x 450mm SS

\$10.00

Compatible with: RR30, RR36, RR54, RR72



107759 - SS304 Braided 1/2" Flex Hose Water 10mm x 600mm SS

\$10.00

Compatible with: RR30, RR36, RR54, RR72



107760 - SS304 Braided 1/2" Flex Hose Water 10mm x 1000mm SS

\$10.00

Compatible with: RR30, RR36, RR54, RR72



107761 - SS304 Braided 1/2" Flex Hose Water 10mm x 1500mm SS

\$12.00

Compatible with: RR30, RR36, RR54, RR72



8010 - Fat Separator Cap L Shaped for water tower SS

\$32.00

Compatible with: RR30, RR36, RR54, RR72



8011 - Fat Separator Cap small for fat tower SS

\$32.00

Notes: \$1200 replacement fee for lost rack kits
Compatible with: RR30, RR36, RR54, RR72



4755 - Fat Bucket 18L Blue (No Frame & No Wheels)

\$42.00

Compatible with: RR30, RR54



RM48 - Fat bucket with wheeled frame

\$155.00

Compatible with: RR36, RR54, RR72



RM90 - Magnet for fat bucket c/w Screw Kit

\$18.00

Compatible with: RR36, RR54, RR72



R230 - Floor jet gasket Graphite Washer M12 Black (OD26xID12.7xT1.6mm)

\$5.00

Compatible with: RR30, RR36, RR54, RR72

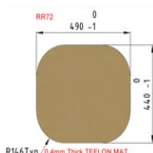
Racks & Mats



3855 - RR54 / RR30 High Temp Cooking Mats Pack of Six

\$215.00

Compatible with: RR30, RR54



3855X - RR72 / RR36 High Temp Cooking Mats Pack of 6

\$240.00

Compatible with: RR36, RR72



LHK30 - Teflon Replacement - Exchange Basis - For Key Hole Hook Left Side RR54 (Box of 30)

\$375.00

Notes: \$1200 replacement fee for lost rack kits
Compatible with: RR30, RR54



RHK30 - Teflon Replacement - Exchange Basis - For Key Hole Hook Right Side RR54 (Box of 30)

\$375.00

Notes: \$1200 replacement fee for lost rack kits
Compatible with: RR54



RHK36 - RR72 / RR36 Teflon Replacement - Exchange Basis - For Key Hole RHS (Box of 36)

\$475.00

Notes: \$1200 replacement fee for lost rack kits
Compatible with: RR72



ADD24 - Teflon Replacement - Exchange Basis - For add on Racks Left Side RR54

\$425.00

Notes: \$1200 replacement fee for lost rack kits
Compatible with: RR30, RR54



ADD36 - RR72 / RR36 Teflon Replacement - Exchange Basis - For Add on Rack Left or Right side (Box of 6)

\$475.00

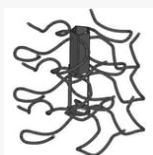
Notes: \$1200 replacement fee for lost rack kits
Compatible with: RR36



LHS30 - Teflon Replacement - Exchange Basis - For Hanging Rack Left Side RR54

\$375.00

Notes: \$1200 replacement fee for lost rack kits
Compatible with: RR30, RR54



RHS30 - Teflon Replacement - Exchange Basis - For Hanging Rack right Side RR54

\$375.00

Notes: \$1200 replacement fee for lost rack kits
Compatible with: RR54



Freight & Handling

\$1.00